



# BACKFLOW PREVENTION

## Check Valves





# BACKFLOW PREVENTION Check Valves



The **JINFLEX "duckbill" flexible check valve** is the efficient way to prevent backflow and the resultant contamination and flooding through such pipes as stormwater outfalls, sewerage outlets and tidal operations.

They are a passive flow device requiring minimal maintenance and no external power source or manual assistance to operate.

The **JINFLEX "duckbill" check valve** is offered as a direct alternative and/or replacement for traditional flap type check valve and can be retrofitted onto the same surfaces whether it be the end of a pipe, flange, levee, rock wall etc.

One of the major benefits of the **JINFLEX "duckbill" check valve** is that unlike traditional flap and inline type check valves, it will restart when buried by sand. In addition, it cannot be buried stuck in the open position, as is commonly the case with flap and other flexible check valves. As a result it is the most reliable backflow prevention device available where sand & mud build up causes other check valves to fail.

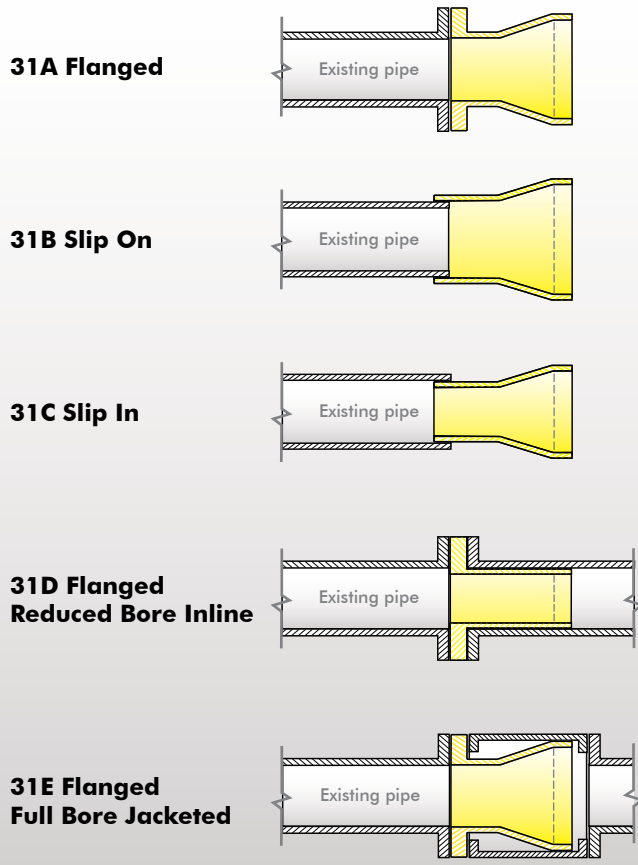
The **JINFLEX "duckbill" check valve** has the lowest head loss of the available backflow prevention devices in the market.

Only 25-50mm head is required to drain the valve, therefore leaving the pipe empty.

Standard head loss vs flow curves are available upon application but each situation is different so please contact **Jindex**.

While standard back pressure tolerances vary in proportion to the valve size, the **JINFLEX "duckbill" check valve** can be tailor made to suit a wide range of back pressures and conditions to suit specific applications.

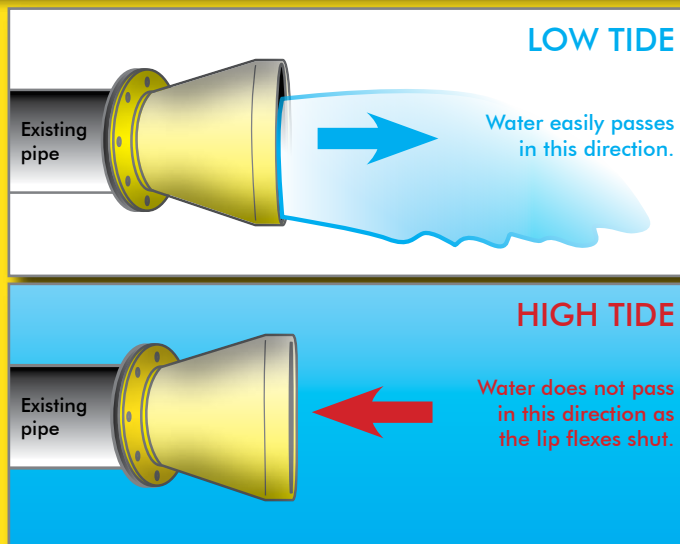
## OVERVIEW OF JINFLEX TYPES:



**Jindex also has installation supervisors and crews available if required.**

### OTHER BENEFITS OF THE JINFLEX CHECK VALVES:

- No jamming open or shut with rust, debris, plastic bags, grass or detritus.
- All rubber construction provides maximum internal abrasion resistance.
- UV resistant.
- Out of round pipes can be tolerated.
- Passive flow device no moving parts therefore no maintenance.
- Does not permanently deform when struck.
- Waves and currents are tolerated without damage.
- Colour matching is available to suit local environment.
- Children and animals find it extremely difficult to get inside and get accidentally trapped.
- Flanges to suit any standard are available.

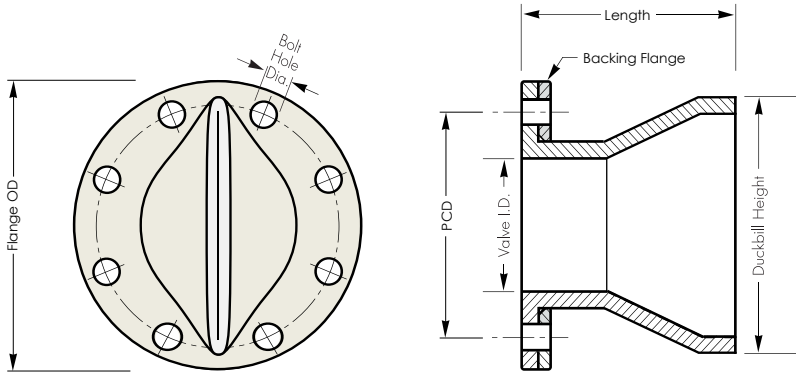


# BACKFLOW PREVENTION Check Valves

## JCV 31A Flanged



Detail of JCV 31A Flanged



AVAILABLE MATERIALS		
Material Code	Cover Material	Tube Material
NEOR	Neoprene	Natural
BB	Chlorobutyl	Chlorobutyl
EE	EPDM	EPDM
NH	Neoprene	Hypalon
NN	Neoprene	Neoprene
NP	Neoprene	Nitrile
PP	Nitrile	Nitrile

**Note:** Other materials on request

Nominal pipe size (mm)	Standard Dimensions for Jinflex Type 31A			Standard Flanges Available									Weight (kg)
	Length (mm)	Jinflex Height (mm)	Flange O.D (mm)	Table D			Table E			ANSI 150			
				PCD (mm)	# of Holes	Dia. Of Holes (mm)	PCD (mm)	# of Holes	Dia. Of Holes (mm)	PCD (mm)	# of Holes	Dia. Of Holes (mm)	
25	102	54	107	83	4	14	83	4	14	79.5	4	16	1.4
40	127	67	127	98	4	14	98	4	14	98.5	4	16	1.8
50	165	99	152	114	4	18	114	4	18	120.5	4	20	2.7
65	191	118	177	127	4	18	127	4	18	139.5	4	20	3.6
80	216	140	190	146	4	18	146	4	18	152.5	4	20	4.5
100	254	188	228	178	4	18	175	8	18	190.5	8	20	6.4
125	305	223	254	210	8	18	210	8	18	216	8	22	7.7
150	330	267	279	235	8	18	235	8	22	241.5	8	22	10
200	381	350	342	292	8	18	292	8	22	298.5	8	22	12
250	423	432	406	356	8	22	356	12	22	362	12	26	18
300	483	499	482	406	12	22	406	12	26	432	12	26	28
350	533	629	533	470	12	26	470	12	26	476	12	32	37
400	610	674	596	521	12	26	521	12	26	540	16	32	57
450	661	756	635	584	12	26	584	16	26	578	16	32	95
500	867	801	698	641	16	26	641	16	26	635	20	32	141
600	1067	1093	812	756	16	30	756	16	33	749.5	20	35	186
700	1143	1169	927	845	20	30	845	20	33	863.5	28	35	219
750	1194	1245	984	927	20	33	927	20	36	914	28	35	251
800	1346	1296	1060	984	20	36	984	20	36	978	28	41	274
900	1473	1404	1168	1092	24	36	1092	24	36	1086	32	41	300
1050	1575	1683	1346	1251	28	36	1251	28	39	1257	36	41	440
1200	1829	1893	1511	1410	32	36	1410	32	39	1422	44	41	455
1350	1880	1988	1682							1594	44	51	492
1500	2083	2159	1854							1759	52	51	582
1800	2489	2667	2197							2096	60	51	680

- Notes :**
1. Dimensions are approximate and may vary depending on actual pipe size, flow and pressure.
  2. Larger sizes are available on request.
  3. Please consult Jindex for available back pressures.
  4. Other shaped flange face configurations can be manufactured.



**Jindex Pty Ltd**

ph: +61 2 9939 7900

email: sales@jindex.com.au fax: +61 2 9939 7099

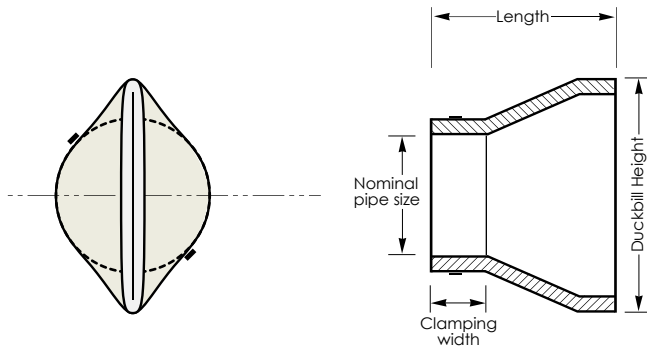


jindex.com.au

# BACKFLOW PREVENTION JCV 31B/C Check Valves Slip On



Detail of JCV 31B/C Slip On



AVAILABLE MATERIALS		
Material Code	Cover Material	Tube Material
NEOR	Neoprene	Natural
BB	Chlorobutyl	Chlorobutyl
EE	EPDM	EPDM
NH	Neoprene	Hypalon
NN	Neoprene	Neoprene
NP	Neoprene	Nitrile
PP	Nitrile	Nitrile

**Note:** Other materials on request

Nominal pipe size (mm)	Standard Dimensions for Jinflex Type 31B/C Slip On			Weight (kg)
	Length (mm)	Jinflex Height (mm)	Clamping Width (mm)	
25	102	54	25	0.23
40	127	67	25	0.34
50	203	98	38	0.68
65	191	117	51	0.79
80	216	140	76	1.81
100	318	184	76	2.27
125	356	222	76	3.18
150	457	267	102	5.44
200	508	349	102	8.16
250	483	432	102	9.07
300	711	498	152	21.77
350	762	584	152	27.22
400	813	660	152	34.02
450	838	752	152	52.16
500	914	819	203	63.05
600	1194	991	203	87.09
700	1118	1168	203	82.1
750	1168	1245	254	121.11
800	1346	1295	254	149.23
900	1524	1473	254	199.13
1050	1549	1683	305	337.02
1200	1829	1892	305	431.83
1350	1880	1988	305	549.76
1500	2057	2159	305	596.48
1800	2489	2667	358	690.38



**Note:** Sand Coloured Finish

**Notes :**

1. Dimensions are approximate and may vary depending on actual pipe size, flow and pressure.
2. Larger sizes are available on request.
3. Please consult Jindex for available back pressures.
4. Other shaped flange face configurations can be manufactured.



**Jindex Pty Ltd**

ph: +61 2 9939 7900

email: sales@jindex.com.au fax: +61 2 9939 7099



jindex.com.au

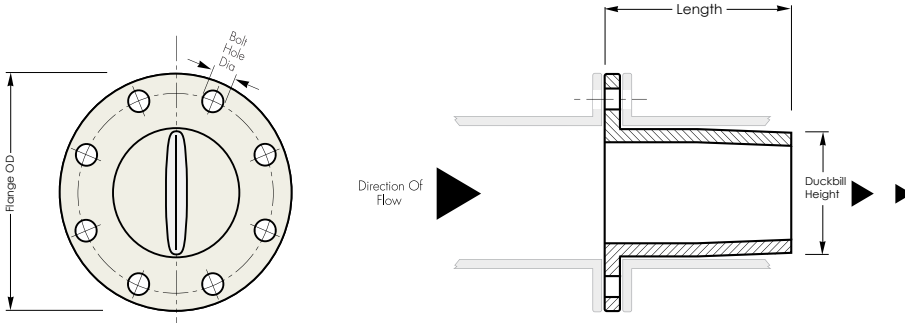


# BACKFLOW PREVENTION JCV 31D

## Check Valves Reduced Bore Inline



Detail JCV 31D Reduced Bore Inline



AVAILABLE MATERIALS		
Material Code	Cover Material	Tube Material
NEOR	Neoprene	Natural
BB	Chlorobutyl	Chlorobutyl
EE	EPDM	EPDM
NH	Neoprene	Hypalon
NN	Neoprene	Neoprene
NP	Neoprene	Nitrile
PP	Nitrile	Nitrile

**Note:** Other materials on request

Nominal pipe size (mm)	Standard Dimensions for Jinflex Type 31D			Standard Flanges Available									Maximum Working Pressure (psig)	Weight (kg)
	Length (mm)	Jinflex Height (mm)	Flange O.D (mm)	Table D			Table E			ANSI 150				
				PCD (mm)	# of Holes	Dia. Of Holes (mm)	PCD (mm)	# of Holes	Dia. Of Holes (mm)	PCD (mm)	# of Holes	Dia. Of Holes (mm)		
50	184	32	152	114	4	18	114	4	18	120.5	4	19	125	1.4
80	229	57	190	146	4	18	146	4	18	152.5	4	19	125	1.8
100	254	98	228	178	4	18	175	8	18	190.5	8	19	100	3.6
125	330	124	254	210	8	18	210	8	18	216	8	22	75	4.5
150	368	149	279	235	8	18	235	8	22	241.5	8	22	75	5.4
200	381	171	342	292	8	18	292	8	22	298.5	8	22	75	5.9
250	533	250	406	356	8	22	356	12	22	362	12	25	50	13.2
300	660	302	482	406	12	22	406	12	26	432	12	25	50	16.8
350	686	305	533	470	12	26	470	12	26	476	12	31	50	18.6
400	813	356	596	521	12	26	521	12	26	540	16	31	50	22.7
450	737	451	635	584	12	26	584	16	26	578	16	31	25	71.7
500	864	502	698	641	16	26	641	16	26	635	20	31	25	106.1
600	1118	603	812	756	16	30	756	16	33	749.5	20	34	25	139.7
700	1194	687	927	845	20	30	845	20	33	863.5	28	34	25	164.2
750	1245	737	984	927	20	33	927	20	36	914	28	34	25	189.1
800	1372	787	1060	984	20	36	984	20	36	978	28	41	25	206
900	1499	889	1168	1092	24	36	1092	24	36	1086	32	41	25	226.3
1050	1676	1041	1346	1251	28	36	1251	28	39	1257	36	41	25	330.7
1200	1880	1194	1511	1410	32	36	1410	32	39	1422	44	41	25	342
1350	1905	1346	1682							1594	44	50	25	368.8
1500	2108	1499	1854							1759	52	50	25	437.3
1800	2515	1803	2197							2096	60	50	25	510.3

- Notes :**
1. Dimensions are approximate and may vary depending on actual pipe size, flow and pressure.
  2. Larger sizes are available on request.
  3. Please consult Jindex for available back pressures.
  4. Other shaped flange face configurations can be manufactured.



**Jindex Pty Ltd**

ph: +61 2 9939 7900

email: sales@jindex.com.au fax: +61 2 9939 7099



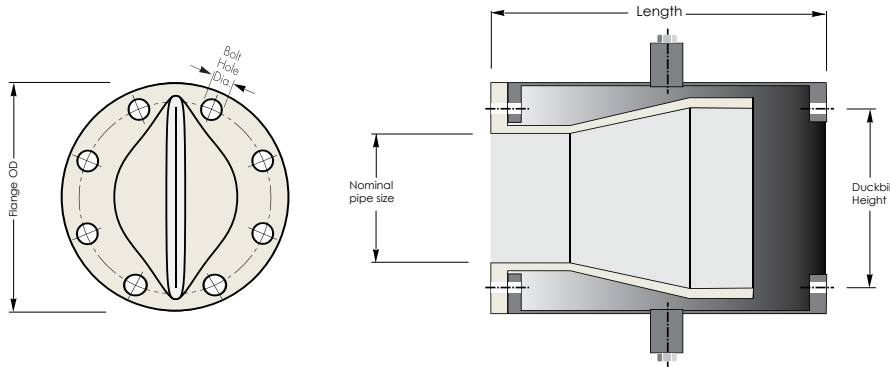
jindex.com.au

# BACKFLOW PREVENTION JCV 31E

## Check Valves Full Bore Jacketed



Detail JCV 31E Full Bore Jacketed



AVAILABLE MATERIALS		
Material Code	Cover Material	Tube Material
NEOR	Neoprene	Natural
BB	Chlorobutyl	Chlorobutyl
EE	EPDM	EPDM
NH	Neoprene	Hypalon
NN	Neoprene	Neoprene
NP	Neoprene	Nitrile
PP	Nitrile	Nitrile

**Note:** Other materials on request

### Benefits

- Maintenance free
- Will seal even with solids entrapment
- Designed to withstand wear
- Quiet operation, no water hammer
- 100% backflow prevention
- Tough enough for abrasive slurries
- No body halves with problematic sealing issues

### Applications

- Mine Tailing Pipe line outfalls
- Dredging
- Portable Water Outfalls
- Stand Pipes
- Pump Backflow Protection
- Wet Wells
- Scrubber Pipe Systems

- Pneumatic Conveying
- Sewer Interceptors
- Outfall Lines

Nominal pipe size (mm)	Standard Dimensions for Jinflex Type 31E			Standard Flanges Available									Working Pressure (psig)	Flushing Port Size
	Length (mm)	Height (mm)	Width (mm)	Table D			Table E			ANSI 150				
				PCD (mm)	# of Holes	Dia. Of Holes (mm)	PCD (mm)	# of Holes	Dia. Of Holes (mm)	PCD (mm)	# of Holes	Dia. Of Holes (mm)		
25	114.3	146.05	108	83	4	14	83	4	14	79.5	4	16	125	12
32	139.7	152.4	114.3	87	4	14	87	4	14	89	4	16	125	12
40	165.1	165.1	127	98	4	14	98	4	14	98.5	4	16	125	12
50	215.9	203.2	152.4	114	4	18	114	4	18	120.5	4	20	125	12
65	241.3	234.95	177.8	127	4	18	127	4	18	139.5	4	20	125	20
80	292.1	247.65	190.5	146	4	18	146	4	18	152.5	4	20	125	20
100	298.45	298.45	228.6	178	4	18	175	8	18	190.5	8	20	125	20
150	482.6	279.4	279.4	235	8	18	235	8	22	241.5	8	22	100	20
200	533.4	482.6	342.9	292	8	18	292	8	22	298.5	8	22	100	25
250	584.2	584.2	406.4	356	8	22	356	12	22	362	12	26	75	25
300	635	685.8	482.6	406	12	22	406	12	26	432	12	26	75	25
350	736.6	723.9	533.4	470	12	26	470	12	26	476	12	32	50	40
400	838.2	762	635	521	12	26	521	12	26	540	16	32	50	40
450	965.2	850.9	635	584	12	26	584	16	26	578	16	32	50	40
500	1054.1	939.8	698.5	641	16	26	641	16	26	635	20	32	50	50
600	1257.3	1219.2	812.8	756	16	30	756	16	33	749.5	20	35	50	50

### Notes :

1. Vacuum supports can be supplied independent to the valve as well as internal supports which can ensure back pressures up to 600psi
2. Dimensions are approximate and may vary depending on actual pipe size, flow and pressure.
3. Larger sizes are available on request.
4. Other shaped flange face configurations can be manufactured.



Jindex Pty Ltd

ph: +61 2 9939 7900

email: sales@jindex.com.au fax: +61 2 9939 7099



jindex.com.au